

D-Case Editor

Installation Procedure

June 23, 2011 Ver. 1.00

DEOSC

Table of Contents

| | | |
|-------------|---|----------|
| 1. | Overview | 3 |
| 1.1. | Trademarks | 3 |
| 2. | Preparation | 3 |
| 2.1. | Supported Environments | 3 |
| 2.2. | Required Files | 3 |
| 2.3. | Network Environment | 3 |
| 3. | Installing Java | 3 |
| 4. | Installing the Running Environment | 3 |
| 4.1. | Downloading Eclipse | 3 |
| 4.2. | Installing Eclipse | 4 |
| 4.3. | Installing Plug-in | 4 |
| 5. | Installing D-Case | 7 |
| 5.1. | Copying the jar Files | 7 |
| 5.2. | Confirming at Activation | 7 |
| 6. | Installing Template Project | 7 |
| 6.1. | Preparation | 7 |
| 6.2. | Importing | 7 |
| 7. | Storing the Parameter Type Definition File | 9 |
| 8. | EPS Output Support | 9 |
| 8.1. | Installing the Conversion Tool | 9 |
| 8.2. | Storing the Conversion Shell | 9 |

1. Overview

This document describes the procedure for installing the environment to run “D-Case Editor.”

1.1. Trademarks

The company names and product names included in this document are the trade marks or registered trademarks of the respective owner(s).

2. Preparation

2.1. Supported Environments

“D-Case Editor” is created for use in the following computer environments:

- Microsoft® Windows XP SP3
- Eclipse IDE Galileo (3.5)

2.2. Required Files

The files required to configure “D-Case Editor” are as follows:

net.dependableos.dcase.diagram.common_xxx.jar
net.dependableos.dcase.diagram.editor_xxx.jar
net.dependableos.dcase.diagram_xxx.jar
net.dependableos.dcase.edit_xxx.jar
net.dependableos.dcase_xxx.jar

* The three x’s (“xxx”) at the end of each file name shall be replaced by the appropriate version number.

2.3. Network Environment

The computer must be connected to the internet in order to install “D-Case Editor.”

3. Installing Java

Eclipse requires JAVA Runtime 5 or later.

Download the Java Runtime installer from the following URL and install the Java virtual machine.

<http://www.java.com/en/download/>

4. Installing the Running Environment

Install Eclipse on your computer. “D-Case Editor” will then run on Eclipse.

4.1. Downloading Eclipse

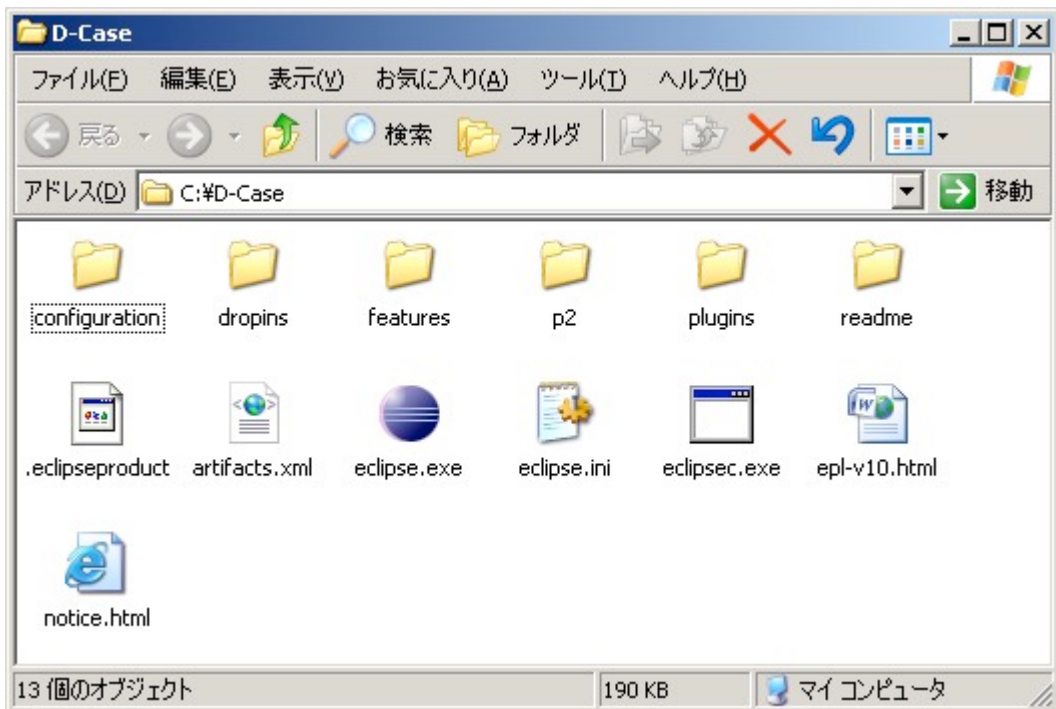
Download the package of Eclipse Galileo (3.5) from the following URL:

<http://www.eclipse.org/downloads/download.php?file=/technology/epp/downloads/release/galileo/SR2/eclipse-java-galileo-SR2-win32.zip>

4.2. Installing Eclipse

Extract the downloaded ZIP file to a given folder.

In this document, the file is extracted to “C:¥D-Case.”

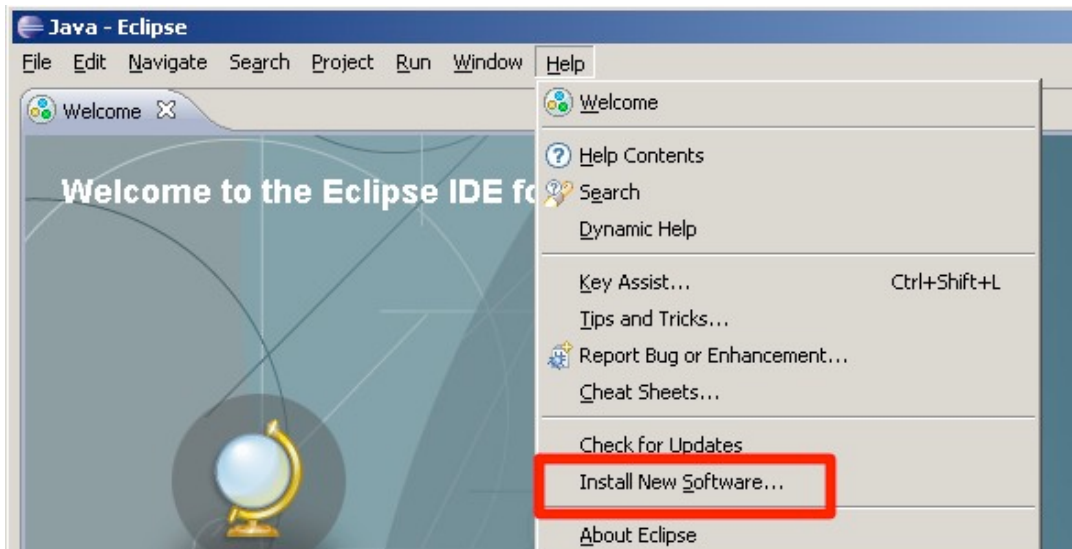


4.3. Installing Plug-in

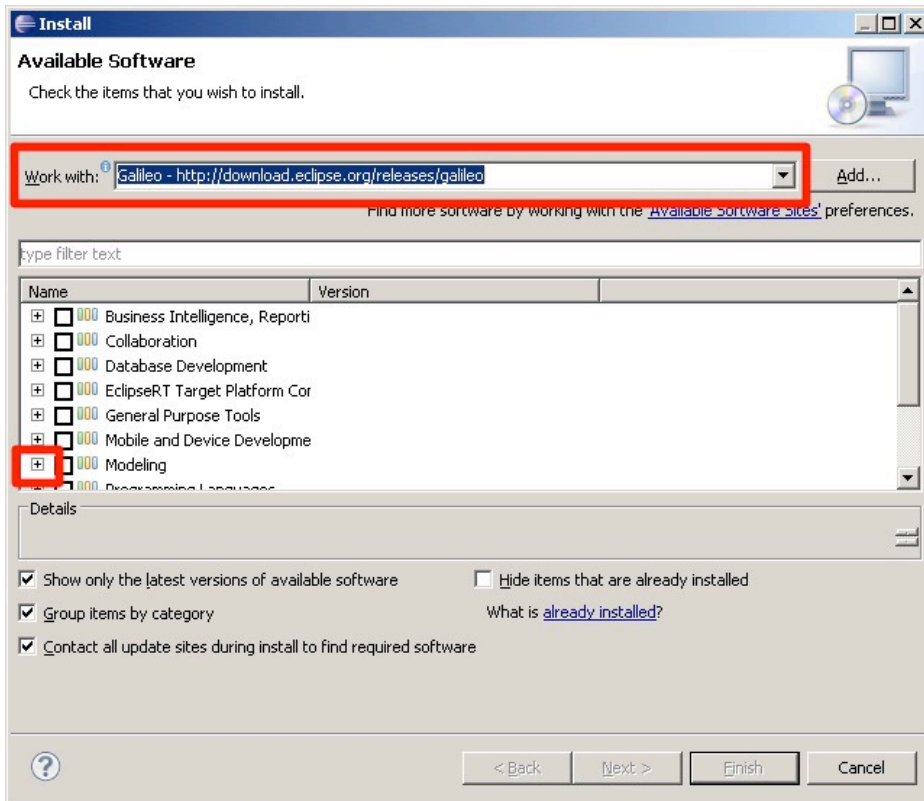
Add the files required to run “D-Case Editor” on Eclipse.

Open Eclipse and select a given workspace.

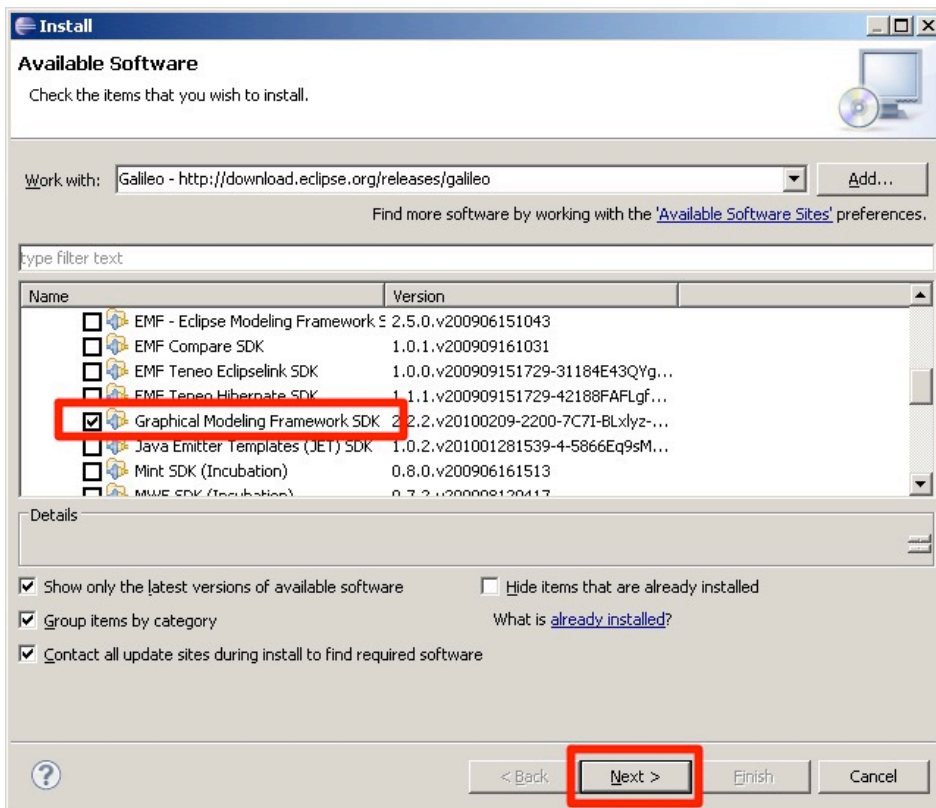
Select the “Help>Install New Software...” menu.



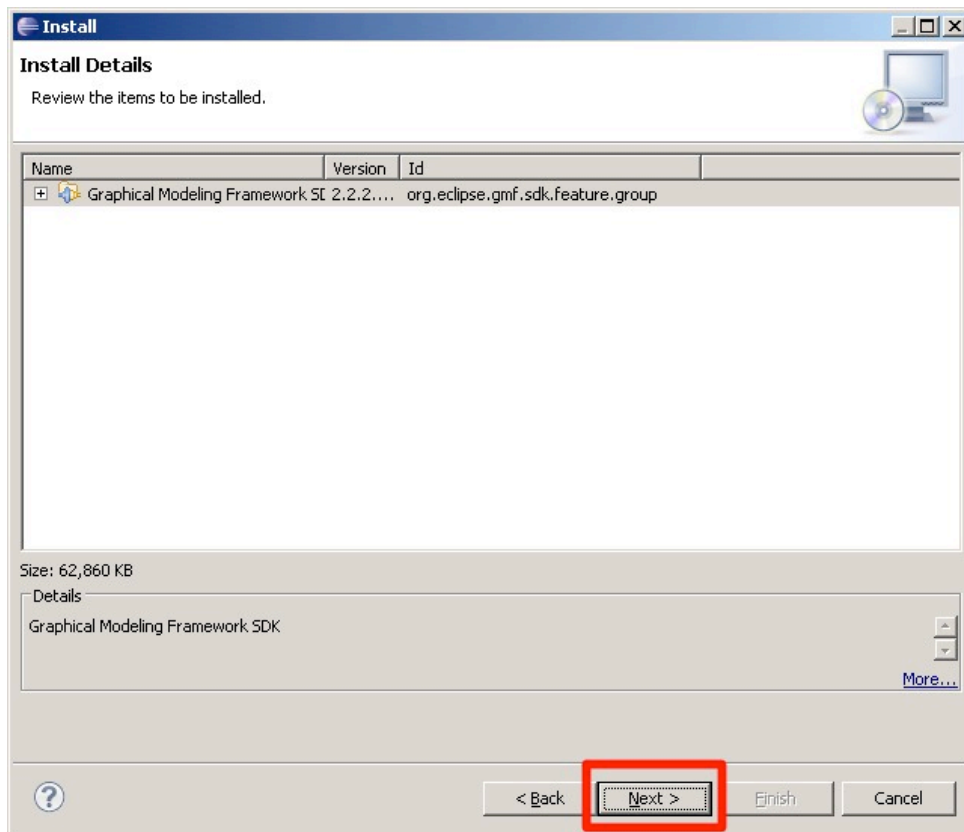
Select Galileo in “Work with” and expand the files in “Modeling” in the list.



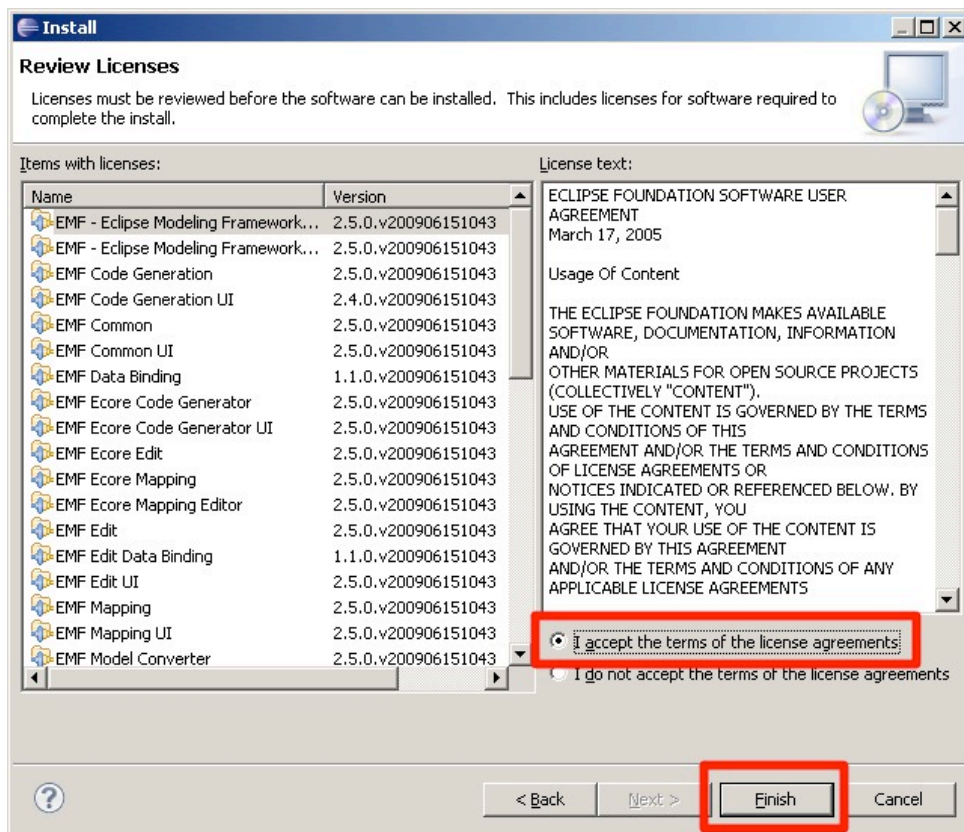
Select “Graphical Modeling Framework SDK” and click the “Next” button to proceed.



Click the “Next” button.



Select to accept the terms of the license agreements and click the “Finish” button.



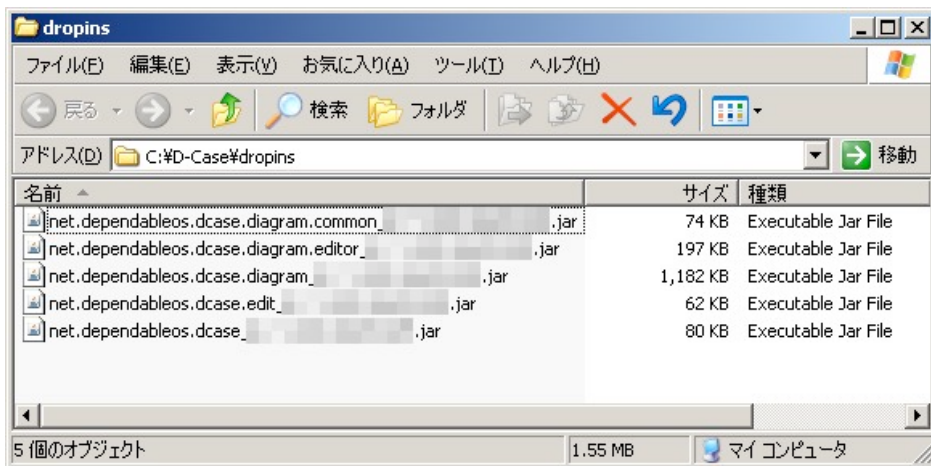
Plug-in installation begins. A message prompting you to restart Eclipse will appear when installation is complete. Restart Eclipse when this message appears.

When Eclipse starts up without any problem, close Eclipse.

5. Installing D-Case

5.1. Copying the jar Files

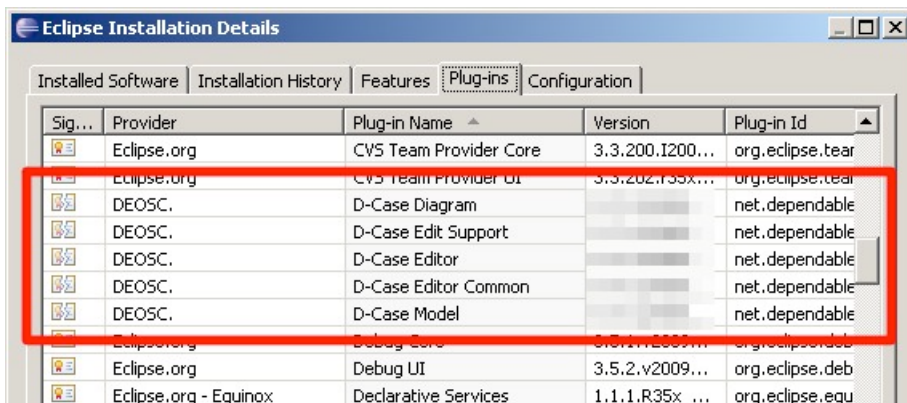
Copy the jar files of “D-Case Editor” in the “dropins” folder of Eclipse.



5.2. Confirming at Activation

Start Eclipse and open the dialog page from “Help>About Eclipse.”

Click the “Installation Details” button to confirm that the copied jar files are recognized.



6. Installing Template Project

6.1. Preparation

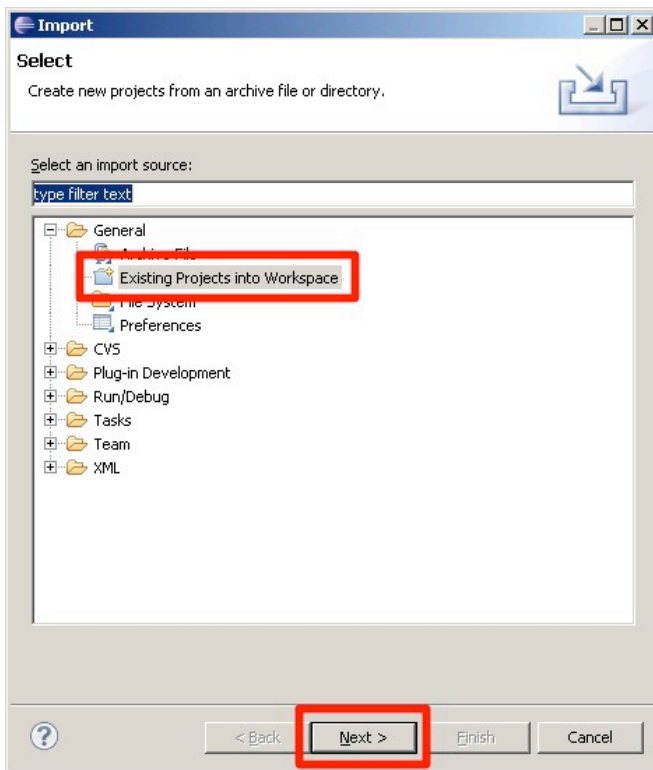
Copy the template project entitled “D-CaseTemplate” to a given folder.

6.2. Importing

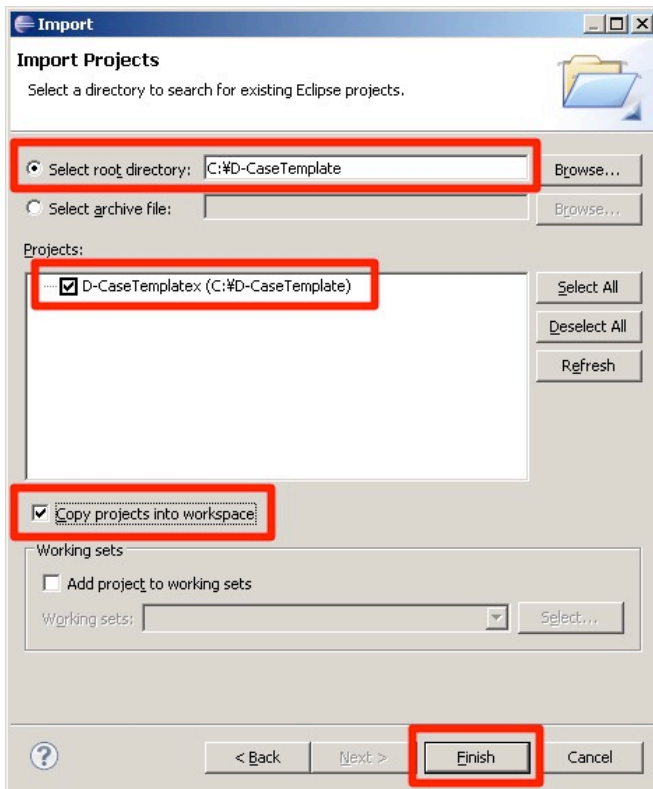
Import the template project to the workspace.

Select the “File>Import” menu of Eclipse to open the import page.

“General-Existing Projects into Workspace”



Specify the folder to which the template project is copied in “Select root directory.” Select “Copy projects into workspace” and click the “Finish” button.

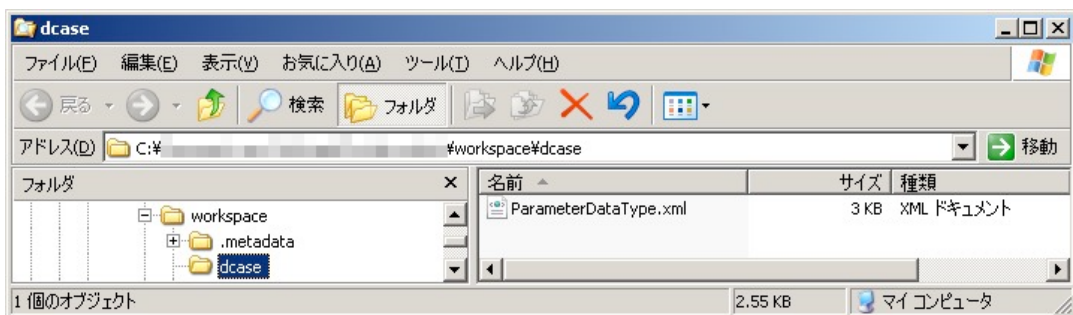


When the import is complete, the template project is copied to the workspace folder.



7. Storing the Parameter Type Definition File

Create a folder named “dcase” directly under the workspace as shown below. Name the parameter type definition file “ParameterDataType.xml” and store it in this file.



8. EPS Output Support

This chapter describes the procedure for installing the EPS output function.

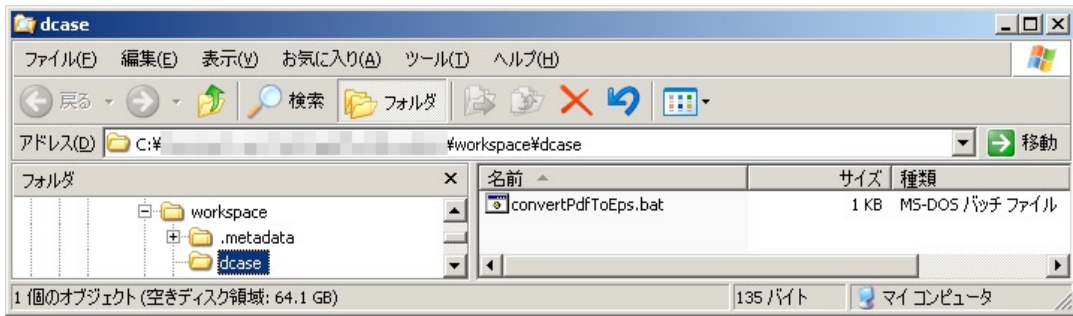
8.1. Installing the Conversion Tool

Download the conversion tool (GhostScript) from the following URL and install it on your computer.

<http://downloads.ghostscript.com/public/gs871w32.exe>

8.2. Storing the Conversion Shell

Create a folder named “dcase” directly under the workspace as shown below. Name the EPS file conversion shell “convertPdfToEps.bat” and store it in this file.



The contents of the file are as shown below. “C:¥Program Files” will be changed to the path of the folder where the conversion tool (GhostScript) is installed.

```
@echo off
set PATH=%PATH%;C:\Program Files\gs\gs8.71\bin;
gswin32c.exe -dNOPAUSE -dBATCH -sDEVICE=epswrite -sOutputFile=%1 %2
exit
```